

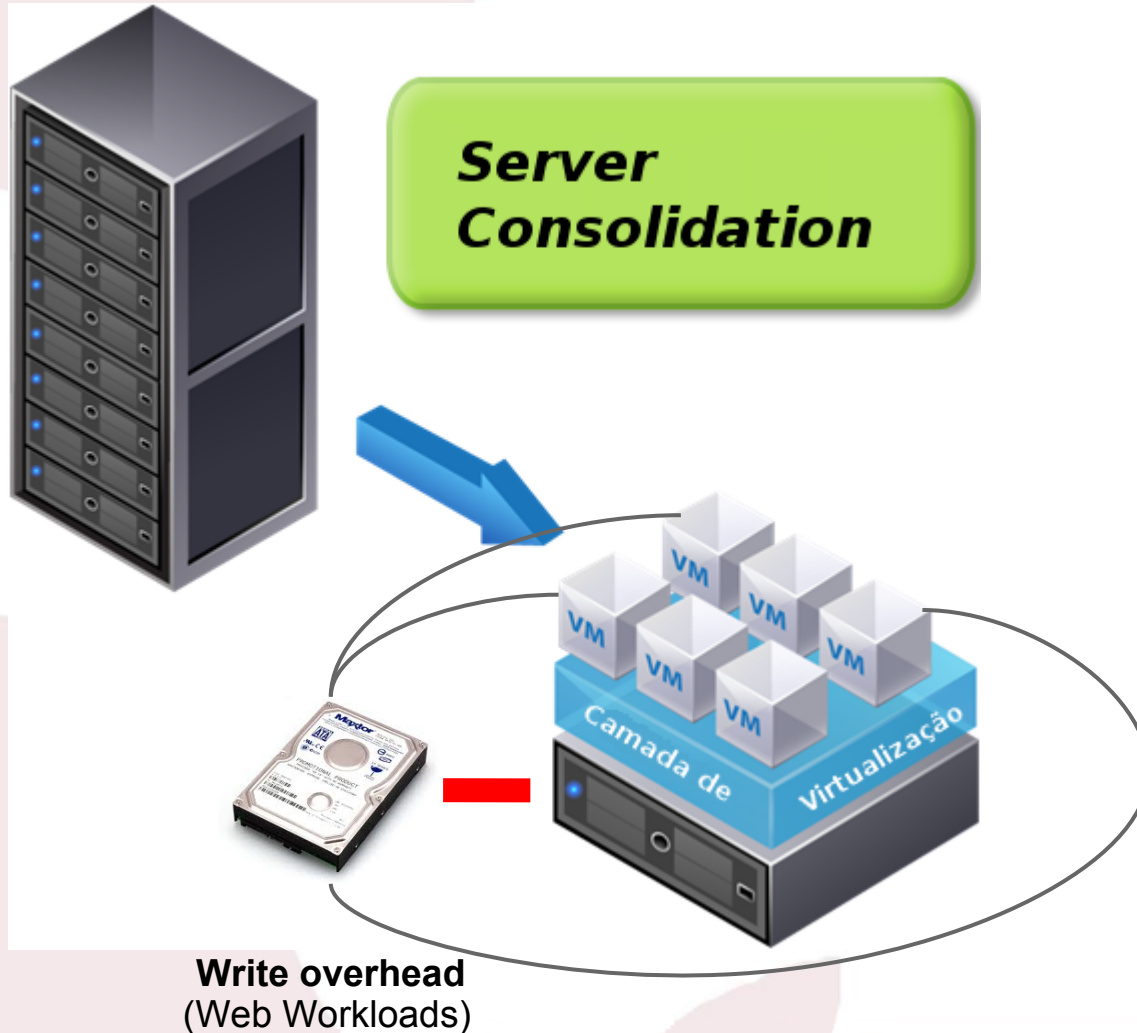
Identified storage issues for intensive write workloads in virtualized servers

Erico Augusto Cavalcanti Guedes <eacg@cin.ufpe.br>

PhD Student

Advisor: Paulo Maciel

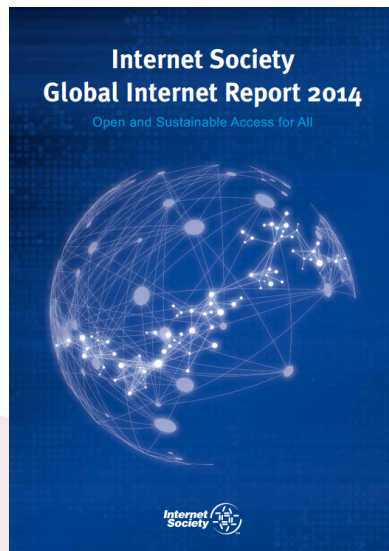
Server Virtualization



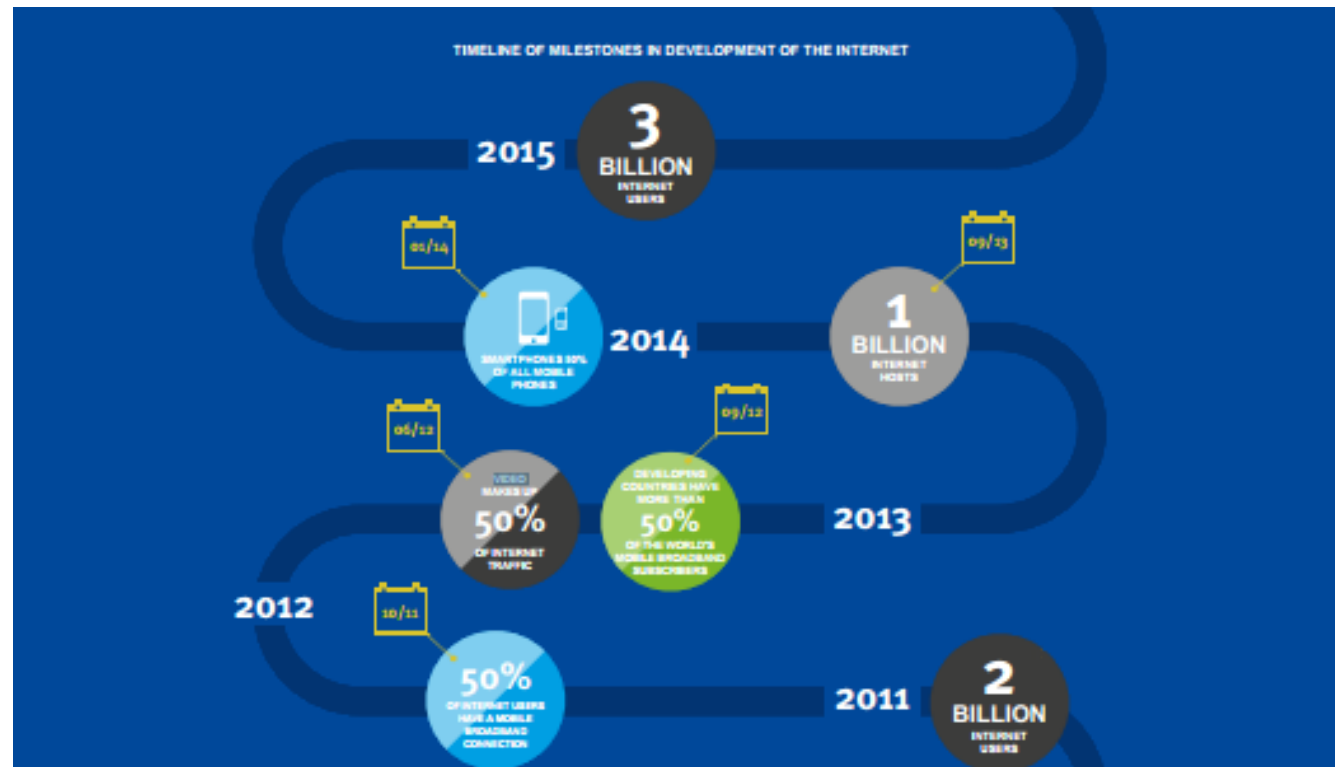
- **Which issues were identified?**
 - Recovery mechanism of several filesystem (ext3, ext4, ZFS) are a threat to storage(DAS) dependability
 - What is the behavior of other storage technologies?
 - SCSI
 - SSD
 - SAN

What else?

- What about video workloads?



- 2017-67%



Cooperation



- **How can I cooperate?**

- Creation of Virtualized Servers Clusters
- Performance tuning of virtualized servers through overhead reduction
- Automation of measurement experiments
- Administration of Linux Servers, Services and Networks



Thank you

&

Questions...